



Part of Absolent Air Care Group



F Monitor Essential

Installation, Operation and Maintenance Manual

F Monitor Essential | 20-218-10-091 | Rev 03 (Last Updated January 2, 2025)
Copyright © 2025 Absolent Air Care Group AB. All rights reserved

No part of this document may be made public or shared without the express permission of Absolent Air Care Group AB.

Filtermist Limited, part of Absolent Air Care Group AB, are based at Telford 54 Business Park, Nedge Hill, Telford, Shropshire, TF3 3AL.

Company Registration Number: 04220347

VAT Number: 776332020

Should you have any requirements not attended to by this manual, do not hesitate to contact our customer service team on **(+44) (0) 1952 290500** or email **sales@filtermist.com**.

Table of Contents

1. Introduction	4
1.1. Parts List	4
2. Installation Guide	5
3. Troubleshooting	12
4. EU Declaration of Conformity	15

1. Introduction

Welcome to the installation and maintenance manual for your **F Monitor Essential**. The F Monitor Essential is a monitoring device that measures airflow to indicate when your unit needs servicing, or if there are any blockages in the extraction system which may be affecting performance.

The monitor uses a traffic light system of coloured LEDs to show the operating status of your unit. A solid or flashing **green light** on airflow will show that airflow is **adequate (>55%)**, a solid or flashing **amber light** means airflow is between **41-55%** - time to arrange a service inspection. A **red light** indicates that immediate action is required as the airflow is **<41%** of the original parameter set. The monitor is powered by two AA batteries (not included), so no electrical connection is required. It easily attaches to your filter with rear magnets.

This manual describes how to install your F Monitor Essential. Please read these instructions fully before commencing work.

1.1. Parts List

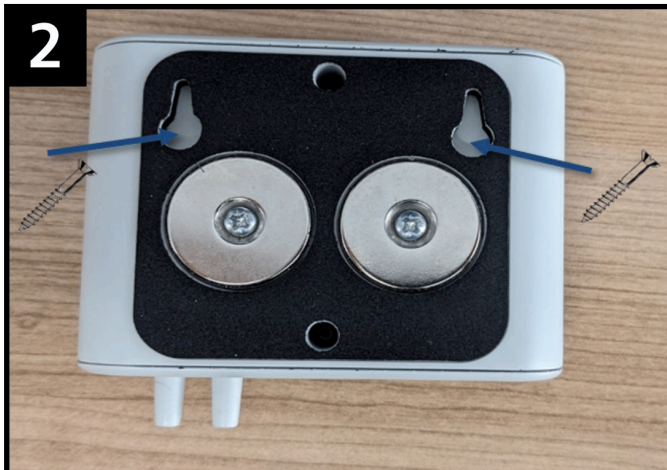
Ensure that you have the following parts prior to attempting installation. Clockwise from top: **(1)** F Monitor Essential [x1]; **(2)** Three Metre Tube [x2]; **(3)** Motor Clip [x1]; **(4)** Nozzle [x1]; **(5)** Conduit Plug [x1]; **(6)** Three Metre Conduit [x1]



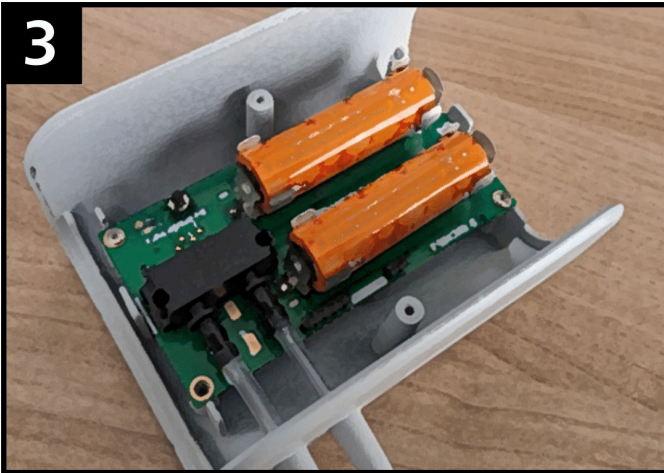
2. Installation Guide



Step 1. Two strong magnets enable you to mount the monitor.



Step 2. Alternatively fix two screws at 60mm centres to a flat vertical surface and hook the monitor onto the screws. 3.5mm max diameter on the thread, 8.5mm max diameter head.



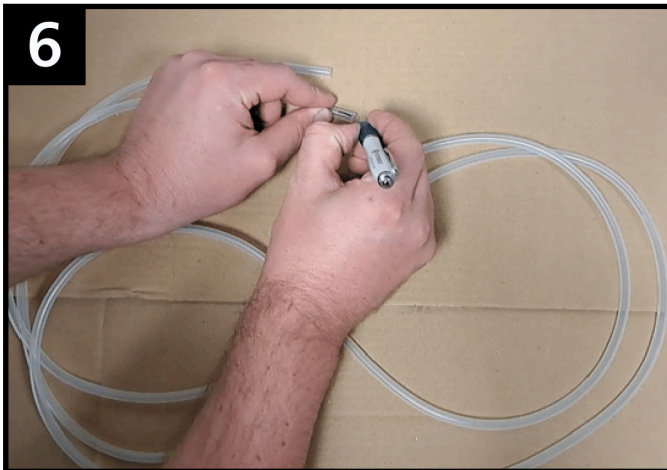
Step 3. Power to the F Monitor Essential is supplied from two AA batteries (not included); these should be replaced when the battery light indicates. Fit the batteries as per the instructions on the circuit board.



Step 4. Both airflow and battery lights will flash twice when starting. After this, a continuous blue flash from the airflow light will occur. This will show that the unit is uncalibrated.



Step 5. To connect the F Monitor Essential to the unit, you first need to prepare the unit: fit the black nozzle into the hole in the diaphragm.



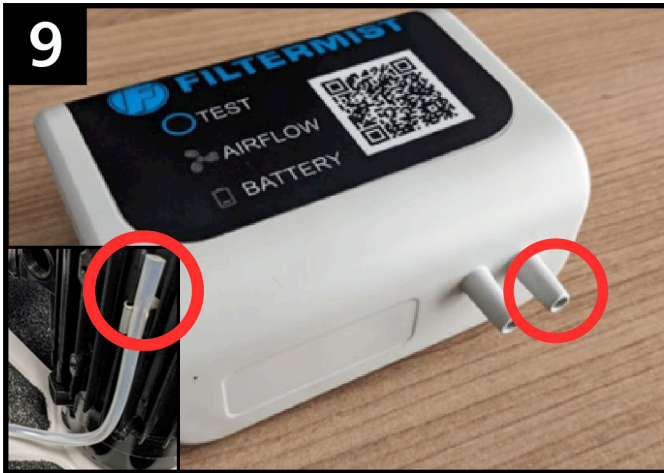
Step 6. Mark both ends of one of the hoses with a pen.



Step 7. To prepare the pressure sensing hoses, feed the two hoses through the conduit.



Step 8. Connect the hose marked with pen to the nozzle on the diaphragm. Then connect to the left hand nozzle on the bottom of the monitor.



Step 9. Connect the other hose to the motor using the motor clip with the hose pointing up. Then fix to the right hand nozzle on the bottom of the monitor.



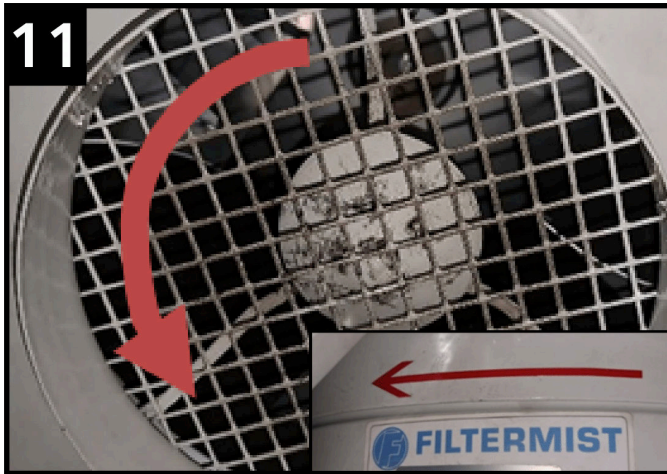
IMPORTANT! Ensure the hoses are not pinched or trapped as this will affect the function of the F Monitor.



Step 10. Feed the conduit through the afterfilter seal (if afterfilter is present) and secure the afterfilter into position using the clips.



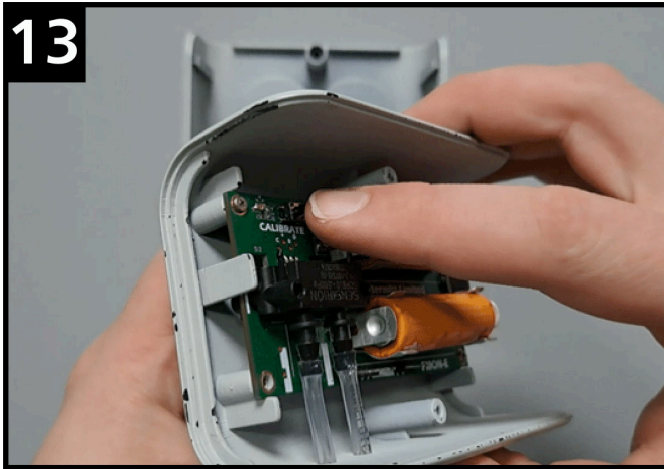
IMPORTANT! When fitting the monitor to units already installed, ensure that the unit is serviced and the ducting and extraction point are clean, allowing the monitor to record maximum airflow. Failure to do this may result in incorrect readings from the monitor.



Step 11. After all parts are fitted, you need to calibrate the monitor. To do this, firstly turn on the filter unit, making sure it is running normally and in the correct direction. Follow the red arrow on the filter unit to check this.



Step 12. Remove the two screws on the back of the F Monitor Essential. Then remove the back cover, insert the batteries, and a double white flash on the airflow and battery lights will occur. A blue light will then flash on the front airflow light. Check that the hoses are connected inside the monitor.



Step 13. When the hoses are connected and the unit is turned on and rotating in the correct direction, press the calibrate button on the circuit board. The monitor will calibrate for the first 10 seconds, and a solid green light will stay on for two minutes as the airflow is dynamically sensed (if a blue light is flashing, the hoses may have been connected the wrong way round).



Step 14. Re-fit the back cover. After two minutes the green light will revert to a flash and sense every 10 minutes.

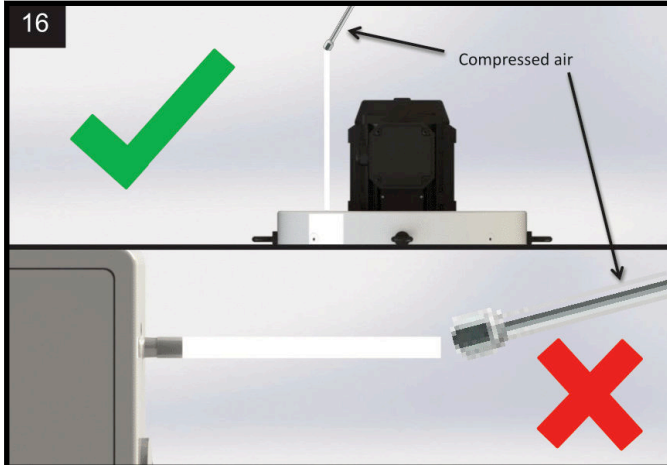
These set up instructions can also be viewed as a film.

Scan the QR code on the F Monitor Essential or go to www.filtermist.com/FMonitorEssential to view.

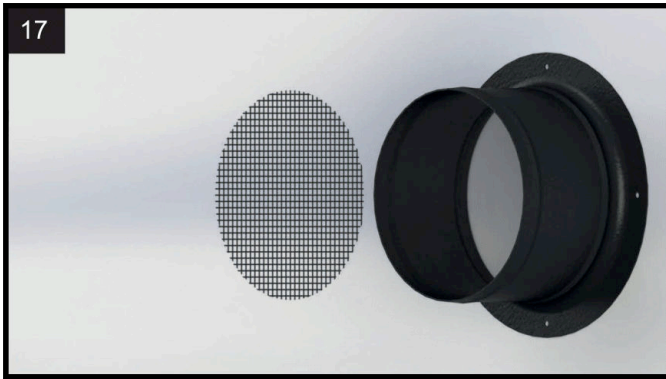
3. Troubleshooting



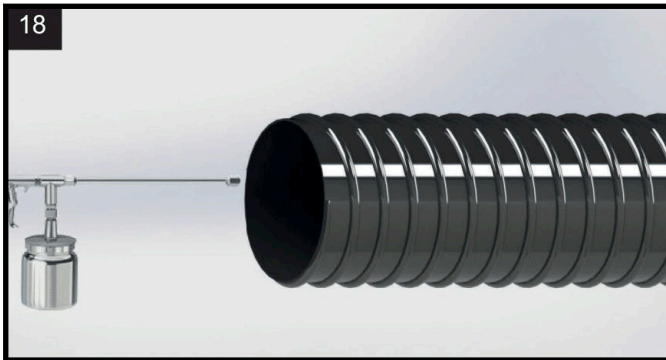
When on RED light check for a blockage before calling for a service. Follow the procedures below.



Step 1. Remove hoses from the sensor and blow compressed air down the hose towards the nozzle, not towards the monitor.



Step 2. Make sure the wire mesh has no blockages.



Step 3. Make sure the ducting has no blockages.

19




Step 4. Make sure the afterfilter is not blocked by removing it from the filter unit and checking.



If a blue light is flashing, this means the monitor is uncalibrated. If you have attempted to calibrate, then it did not recognise the airflow. You will need to recalibrate.

4. EU Declaration of Conformity

We		
Company Name: Filtermist Limited		
Postal address: Telford 54 Business Park, Nedge Hill		
City: Telford		
Postcode: TF3 3AL		
Telephone Number: 01952 290500		
E-mail address: sales@filtermist.com		
Declare that this DOC is issued under the sold responsibility of the manufacturer.		
Product: F Monitor Essential, F Monitor 2 and 2+		
Type: N/A		
Batch: N/A		
Serial Number: See Unit		
Brand: Filtermist		
Object of the declaration		
Monitoring device for Filtermist units. To be fitted to S and FX Series Filtermist units to monitor performance.		
The object of the declaration described above is in conformity with the relevant Union harmonisation legislation:		
Low Voltage Directive (2014/35/EU), Radio Equipment Directive (2014/53/EU), RoHS Directive (2015/863/EU)		
The following harmonised standards and technical specifications have been applied (title, date of standard/specification):		
EN IEC 62368-1:2020+A11:2020, EN 55032:2015+A1:2020, EN 55035:2017/A11:2020, EN 61000-4-2:2019, EN 61000-4-5:2014+A1:2017, EN 61000-3-2:2019+A1:2021, EN 61000-3-3:2013, EN 61000-4-4:2012		
Additional Information:		
The technical file has been compiled in accordance with Part A of Annex VII of the Machinery Directive 2006/42/EC.		
The relevant authorised person undertakes to transmit, in response to a reasoned request by the national authorities, relevant information on the machinery. This information will be transmitted by: (email, post).		
Person authorised to compile the technical file, based in the European community is: Absolent AB		
Address: Staplaregatan 1, SE-531 40 Lidköping, Sweden		
Signed for an on behalf of:		
Place of Issue:	yyyy-mm-dd:	Name, Function and Signature:
Filtermist Limited, Telford 54 Business Park, Nedge Hill, Telford, Shropshire, TF3 3AL, England	2025-01-01	Craig Haynes, Head of Engineering
		

Supplied by:



Certificate Number 1122
ISO 9001
ISO 14001